

Introducing the EC-740T/L Ultra-Slim Colonoscope with Smart Bend



Fujifilm is expanding its line of ELUXEO® 700 Series endoscopes with the release of the EC-740T/L Ultra-Slim Colonoscope featuring Smart Bend technology. The 210° upwards Smart Bend at the distal end and small bending radius provide excellent maneuverability, observation, and capability for therapeutic treatments. The advanced retroflexion increases visualization, allowing better access to treat lesions behind folds during procedures like Endoscopic Submucosal Dissection (ESD).

The EC-740T/L also features an ultra-slim insertion tube, adaptive bending and advanced force transmission capabilities to help improve insertion and navigation when examining challenging anatomy. Like all Fujifilm 700 Series colonoscopes, the EC-740T/L is equipped with Linked Color Imaging (LCI®) and Blue Light Imaging (BLI) light mode options for enhanced detection and characterization of lesions and adenomas.

HIGHLIGHTED FEATURES

- Smart Bend technology with 210° retroflexion at the distal end, enabling access behind folds for improved detection and enhanced angulation
- Ultra-slim insertion tube with adaptive bending and advanced force transmission technology for improved access and scope maneuverability in challenging anatomy
- A water jet and a large working channel of 3.2mm in an ultra-slim design
- Ergonomic G7 control portion designed for ease of movement to help reduce fatigue
- Super Honeycomb CCD imaging technology enables excellent visualization
- LCI and BLI light mode options enhance detection and characterization
- Compatibility with the ELUXEO® processor system featuring 1-step connection, innovative 4-LED Multi-Light illumination technology for high quality images, videos displayed in full HD, and with an extended LED life expectancy of up to six years¹

| Category | Specification |
|-------------------------------------|---|
| Field of View | 140° |
| Viewing Direction | 0° (Forward) |
| Observation Range | 3 - 100mm |
| Bending Capability | Up: 210° Down: 160° Right: 160° Left: 160° |
| Working Length | 1,690mm |
| Total Length | 1,990mm |
| Distal End Diameter | 9.8mm |
| Insertion Tube Diameter | 10.7mm |
| Minimum Instrument Channel Diameter | 3.2mm |
| Image Type | Super CCD |
| Flexibility Adjustment | Not available |



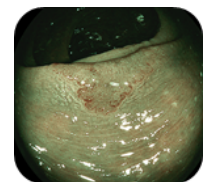
Colon - White Light



Colon - LCI



Colon - White Light



Colon - BLI

¹ Based on OEM manufacturers and Fujifilm evaluation

